

TRAX 2021

CHEVROLET 





YOUR KEY TO THE CITY.

Cities are great when you have the right tour guide. That's where the 2021 Chevrolet Trax comes in. This small SUV is built to help you get in and out of tight parking spots while letting you and four passengers roam around town. With its safety features and surprising cargo flexibility, Trax is ready to make the urban landscape your personal stomping ground.

FIND NEW ROADS™

Trax LT in Silver Ice Metallic.

MODELS

LS

The small SUV that's right for almost any budget. With its standard 1.4L turbocharged engine and available AWD, Trax is well-suited to zipping around any town.

Trax is comfortable in parking spaces and ever-present traffic, with a higher driving position than most cars and plenty of utility inside.

LS is well-equipped, with features like a StabiliTrak® Electronic Stability Control System and the Chevrolet Infotainment 3 system.¹ Plus, you can add an available 4G LTE Wi-Fi® Hotspot², which provides a fast and reliable connection to stay in touch while you're on the go.



¹ Chevrolet Infotainment System functionality varies by model. Full functionality requires compatible Bluetooth and smartphone, and USB connectivity for some devices. ² Service varies with conditions and location. Requires active service and paid AT&T data plan. Visit onstar.com for details and limitations.

MODELS

LT

Take a step up in style while enjoying convenient features such as heated power-adjustable body-color mirrors designed to help clear snow and ice in foul weather.

You can opt for the available Driver Confidence Package, which includes Side Blind Zone Alert,¹ Rear Cross Traffic Alert¹ and Rear Park Assist¹.

LT is available in several attractive black treatment special editions, including a Midnight Edition, a Redline Edition and a Sport Edition. All include 18-inch Black-finish aluminum wheels to give your Trax a bold look.



¹ Read the vehicle Owner's Manual for important feature limitations and information.

INTERIOR DESIGN

TASTEFUL IN EVERY DETAIL.

You'll be comfortable from the first moment you sit inside Trax, with everything in the right place and finer touches you'll appreciate. Contrasting stitching accents the seats. An available Premium Seat Package includes heated driver and front passenger seats with leatherette seating surfaces.

A dual cockpit design creates attractive symmetry. And many of the tactile surfaces are made of soft touch materials that provide a rich feel.

A Driver Information Center lets you view information such as fuel range, oil life, tire pressure and more.

Trax LT interior in Jet Black with available features.

CARGO MANAGEMENT





INSTANT ACCESS.

Trax is designed with a number of reconfigurable features that make cargo management, and carrying passengers, a breeze. They're just a few of the many things that make this small SUV so easy to love.

You can seat five people, and there are eight different configurations to carry passengers and cargo wherever you're going.

With a 60/40 split-folding rear seat and a fold-flat front passenger seat, you can carry items up to eight feet long. Plus, there's 48.4 cu. ft¹ of maximum cargo space with the rear seats folded down.

¹ Cargo and load capacity limited by weight and distribution.

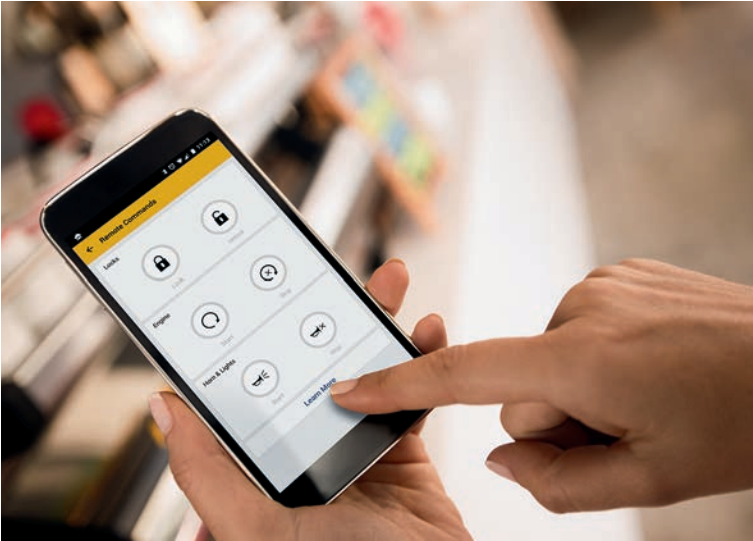
TECHNOLOGY

Available myChevrolet Mobile App¹ includes remote vehicle start if properly equipped (requires paid plan).

Two convenient USB ports² and an auxiliary input jack.

Android Auto™³ compatibility.

Keyless Open and Start available on LT.



¹ Available on select Apple and Android devices. Service availability, features and functionality vary by vehicle, device and the plan you are enrolled in. User terms apply. Device data connection required. Visit onstar.com for details and limitations.

² Not compatible with all devices. ³ Vehicle user interface is a product of Google and its terms and privacy statements apply. Requires the Android Auto app on Google Play and an Android compatible smartphone running Android 5.0 or higher. Data plan rates apply.

THE WORLD AT YOUR FINGERTIPS.

- The Chevrolet Infotainment 3 system¹ is intuitive and easy to use with the 7-inch diagonal color touch-screen display.
- Apple CarPlay[®] compatibility²
- Android Auto[™] compatibility³
- Available 4G LTE Wi-Fi[®] Hotspot⁴ provides a fast and reliable connection to stay in touch while you're on the go.

¹ Chevrolet Infotainment System functionality varies by model. Full functionality requires compatible Bluetooth and smartphone, and USB connectivity for some devices. ² Vehicle user interface is a product of Apple and its terms and privacy statements apply. Requires compatible iPhone and data plan rates apply. ³ Vehicle user interface is a product of Google and its terms and privacy statements apply. Requires the Android Auto app on Google Play and an Android compatible smartphone running Android 5.0 or higher. Data plan rates apply. ⁴ Service varies with conditions and location. Requires active service and paid AT&T data plan. Visit onstar.com for details and limitations.

Apple CarPlay is a trademark of Apple Inc. Siri, iPhone and Apple Music are trademarks of Apple Inc., registered in the U.S. and other countries. Android Auto and Google are trademarks of Google LLC.

TECHNOLOGY DESIGNED TO HELP PREVENT AND PROTECT.



Side Blind Zone Alert. This feature can provide side mirror visual alerts when a moving vehicle is detected in a side blind zone. Available on LT.



Rear Vision Camera. This feature provides an image of the area directly behind your vehicle when traveling in Reverse at low speeds. Standard on all models.



Rear Park Assist. Can provide distance alerts to nearby detected objects behind your vehicle to help you park and avoid collisions when traveling in Reverse at low speeds. Available on LT.



Rear Cross Traffic Alert. This feature can warn you of detected left or right cross traffic behind your Trax when in Reverse. Available on LT.



10 standard airbags! Every Trax includes frontal and knee airbags for driver and front passenger and head-curtain and seat-mounted side-impact airbags for all outboard seating positions.



StabiliTrak Electronic Stability Control. This standard system detects the difference between the path being steered and the direction the vehicle is actually traveling. It then uses the brakes and, if necessary, adjusts propulsion torque to help you keep your Trax on track.

Safety starts with you. Safety or driver assistance features are no substitute for the driver's responsibility to operate the vehicle in a safe manner. The driver should remain attentive to traffic, surroundings and road conditions at all times. Visibility, weather and road conditions may affect feature performance. Read the vehicle Owner's Manual for more important feature limitations and information.

Available features shown.



PERFORMANCE

ENERGIZE YOUR COMMUTE.

- ECOTEC® 1.4L turbocharged engine.
- Electronically controlled 6-speed automatic transmission.
- Standard front-wheel drive (FWD) or available all-wheel drive (AWD), which engages automatically when accelerating from a standing start and shifts back to FWD when no longer needed.



Trax LT in Silver Ice Metallic.

SPECIAL FEATURES



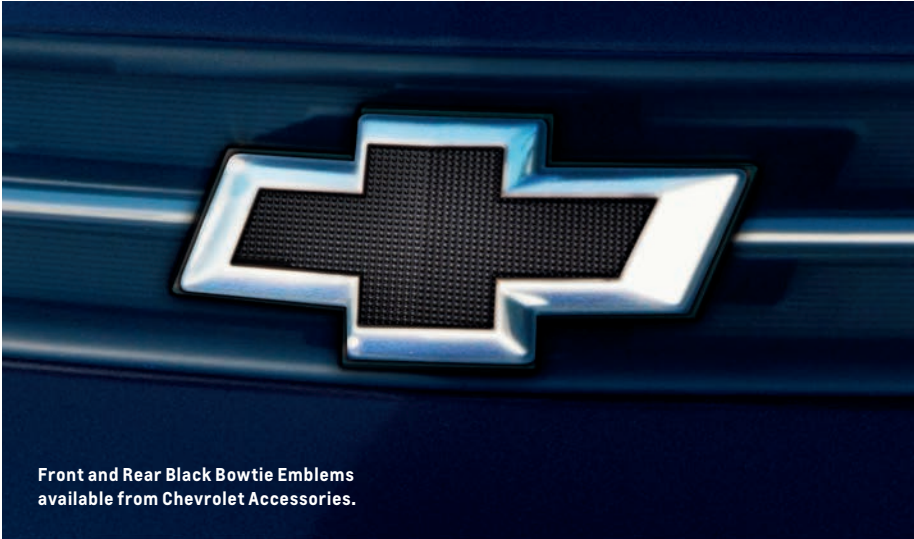
BLACK IS ALWAYS IN FASHION.

Meet the black-on-black-on-black Trax Midnight Edition, available on LT, which adds a whole different attitude to this small SUV.

- 18-inch gloss Black aluminum wheels.
- Black front and rear skid plates.
- Black bowtie emblems.
- Black beltline moldings and door handles.



Trax Redline Edition shown in Silver Ice Metallic. Available on LT.



Front and Rear Black Bowtie Emblems available from Chevrolet Accessories.



Trax Sport Edition shown in Summit White. Available on LT.



All-Weather Floor Liners available from Chevrolet Accessories.

EXTERIOR COLORS



Summit White



Iridescent Pearl Tricoat^{1,2}



Silver Ice Metallic



Shadow Gray Metallic



Stone Gray Metallic



Crimson Metallic



Black Cherry Metallic



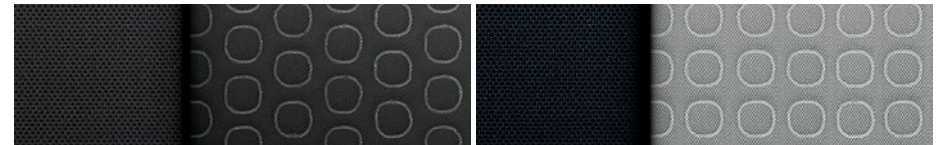
Midnight Blue Metallic



Mosaic Black Metallic

¹ Not available on LS. ² Extra-cost color.

MODELS



Jet Black Cloth

Light Ash Gray Cloth (shown)



16" Painted-Aluminum Wheels
Standard on LS

LS Trax LS includes these features:

MECHANICAL

Brakes – 4-wheel antilock (front disc/rear drum on FWD models; 4-wheel disc on AWD models)

Engine – ECOTEC 1.4L turbocharged DOHC 4-cylinder with Variable Valve Timing (VVT)

Hill Start Assist

StabiliTrak – Electronic Stability Control System with Traction Control

Transmission – 6-speed automatic with overdrive and Driver Shift Control

EXTERIOR

Daytime running lamps – reduced intensity high beam

Glass – solar-absorbing tinted; acoustic-laminated windshield

Headlamps – halogen reflector, automatic on/off with automatic delay

Mirrors – power-adjustable, manual-folding, body-color with Black base

Moldings – Black beltline

Tire – compact spare

Tires – P205/70R16

Wipers – front variable-speed, intermittent with washers; rear intermittent with washer

INTERIOR

Air conditioning – manual, single-zone

Audio – 6-speaker system

Compass – digital, in Driver Information Center

Door locks – power programmable with lockout protection and manual rear door child security

Driver Information Center – 3.5-inch diagonal monochromatic display

Entertainment – Chevrolet Infotainment 3 system¹ with 7-inch diagonal color touch-screen, AM/FM stereo, Bluetooth[®] audio streaming² for two active devices, voice command pass-through to compatible phone, and Apple CarPlay^{®3} and Android Auto^{™4} compatibility

Floor mats – carpeted front and rear

Lighting – front-seat reading lamps, overhead courtesy lamp and rear cargo area lamp

INTERIOR (CONTINUED)

Media – two USB ports⁵ and auxiliary input jack

Power outlet – auxiliary 12-volt

Rear Vision Camera⁶

Remote Keyless Entry – with panic alarm

Seat – driver 4-way manual adjuster with power lumbar control and armrest

Seat – fold-flat front passenger seatback

Seats – rear, 60/40 split-folding bench

SiriusXM^{®7} – All Access Package with 3-month trial subscription

Steering column – manual tilt and telescopic

Steering wheel – mounted audio and phone controls

Theft-deterrent system – unauthorized entry

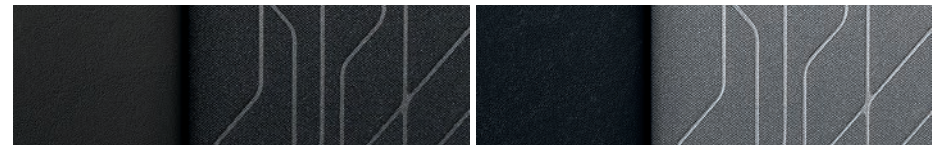
Tire Pressure Monitoring System (does not monitor spare tire)

Visors – driver and front passenger, covered vanity mirrors

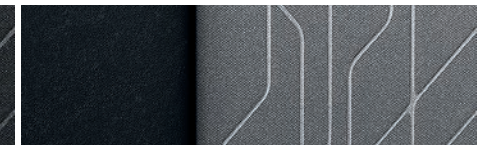
Windows – power with driver express-up/-down, all others express-down

¹ Chevrolet Infotainment System functionality varies by model. Full functionality requires compatible Bluetooth and smartphone, and USB connectivity for some devices. ² Go to my.chevrolet.com/learnAbout/bluetooth to find out which phones are compatible with the vehicle. Full Bluetooth feature functionality varies by device, model and software version. ³ Vehicle user interface is a product of Apple and its terms and privacy statements apply. Requires compatible iPhone and data plan rates apply. ⁴ Vehicle user interface is a product of Google and its terms and privacy statements apply. Requires the Android Auto app on Google Play and an Android compatible smartphone running Android 5.0 or higher. Data plan rates apply. ⁵ Not compatible with all devices. ⁶ Read the vehicle Owner's Manual for important feature limitations and information. ⁷ If you decide to continue service after your trial, the subscription plan you choose will automatically renew thereafter and you will be charged according to your chosen payment method at then-current rates. Fees and taxes apply. See the SiriusXM Customer Agreement at siriusxm.com for complete terms and how to cancel. All fees, content, features and availability are subject to change.

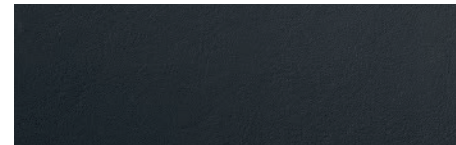
MODELS (CONTINUED)



Jet Black Deluxe Cloth/Leatherette Seating Surfaces



Light Ash Gray Deluxe Cloth/Leatherette Seating Surfaces



Jet Black Leatherette Seating Surfaces (shown)¹



Light Ash Gray Leatherette Seating Surfaces¹



16" Painted-Aluminum Wheels
Standard on LT



18" Gloss Black Aluminum Wheels
Available on LT with Midnight Edition
or Sport Edition



18" Black-Finish Aluminum Wheels
with Red Accent Stripes
Available on LT with Redline Edition

LT In addition to or replacing LS features, LT includes:

EXTERIOR

Daytime running lamps – LED

Glass – deep-tinted rear windows

Headlamps – projector-style halogen, automatic on/off with automatic delay

Luggage rack – side rails, roof-mounted

Mirrors – heated, power-adjustable, manual-folding with body-color caps

Moldings – chrome beltline

Skid plates – front and rear, Silver-painted

Taillamps – LED

INTERIOR

Cargo area – security cover, rigid, removable

Cruise control – electronic with Set and Resume Speed

Power outlet – 120-volt on rear of center console

Remote vehicle starter system

Storage – front passenger underseat drawer

¹ Requires available Premium Seat Package.

SPECIFICATIONS

● STANDARD ○ AVAILABLE – NOT AVAILABLE

	LS	LT
EXTERIOR		
Glass: Deep-tinted rear windows (requires available Tint and Cruise Package on LS)	○	●
ENGINE/CHASSIS		
All-wheel drive	○	○
Engine: ECOTEC 1.4L turbocharged DOHC 4-cylinder with Variable Valve Timing (VVT)	●	●
Transmission: 6-speed automatic with overdrive and Driver Shift Control	●	●
SAFETY & SECURITY		
Airbags: ¹ Frontal and knee airbags for driver and front passenger; seat-mounted side-impact airbags for all outboard seating positions; head-curtain airbags for front and rear outboard seating positions; includes front Passenger Sensing System for frontal passenger airbag	●	●
LATCH system (Lower Anchors and Tethers for Children), for child restraint systems	●	●
Rear Cross Traffic Alert ² (requires available Driver Confidence Package)	–	○
Rear Park Assist ² (requires available Driver Confidence Package)	–	○
Rear Vision Camera ²	●	●
Side Blind Zone Alert ² (requires available Driver Confidence Package)	–	○
Theft-deterrent system: Unauthorized entry	●	●
Up to 3 months of OnStar Safety & Security coverage ³ which includes Automatic Crash Response, Stolen Vehicle Assistance, Emergency Services, Crisis Assist, Roadside Assistance and Turn-by-Turn Navigation ⁴	●	●
INTERIOR		
Cruise control: Electronic with Set and Resume Speed (requires available Tint and Cruise Package on LS)	○	●
Remote Keyless Entry: With panic alarm	●	●
Keyless Open and Start (requires available LT Convenience Package)	–	○
Steering wheel: 3-spoke with mounted audio and phone interface controls	●	●
3-spoke with mounted cruise controls (requires available Tint and Cruise Package on LS)	○	●
3-spoke leather-wrapped (requires available LT Convenience Package)	–	○
SEATING		
Seats: Front bucket	●	●
Rear 60/40 manual-folding split-bench	●	●
Seat: Driver 4-way manual adjuster with power lumbar control and armrest	●	●
Driver 6-way power adjuster with power lumbar control (requires available LT Convenience Package)	–	○
Front passenger fold-flat seatback	●	●
Heated driver and front passenger seats (requires available Premium Seat Package)	–	○

	LS	LT
ENTERTAINMENT		
Chevrolet Infotainment 3 system ⁵ with 7-inch diagonal color touch-screen, AM/FM stereo, Bluetooth [®] audio streaming ⁶ for two active devices, voice command pass-through to compatible phone, and Apple CarPlay ^{®7} and Android Auto ^{™8} compatibility	●	●
Audio: 6-speaker system	●	●
Media: Two USB ports ⁹ and auxiliary input jack	●	●
SiriusXM ^{®10} All Access Package with 3-month trial subscription	●	●
Available 4G LTE Wi-Fi [®] Hotspot ¹¹ for up to seven devices, includes 1 month or 3 GB of data (whichever comes first)	○	○
Chevrolet Connected Access ¹² with 10 years of standard connectivity, which currently enables features such as Vehicle Diagnostics and Dealer Maintenance Notification	●	●
PACKAGES AND SPECIAL EDITIONS		
Tint and Cruise Package	○	–
Deep-tinted rear windows and cruise control	–	○
Driver Confidence Package	–	○
Side Blind Zone Alert ² ; Rear Cross Traffic Alert ² and Rear Park Assist ² (requires available LT Convenience Package)	–	○
LT Convenience Package	–	○
Keyless Open and Start, 6-way power driver seat adjuster with power lumbar control, and 3-spoke leather-wrapped steering wheel	–	○
Midnight Edition	–	○
18" gloss Black aluminum wheels, P215/55R18 blackwall tires, Black front and rear skid plates, Black bowtie emblems, Black beltline moldings and Black door handles (requires available LT Convenience Package, Mosaic Black Metallic exterior color and Jet Black interior color)	–	○
Premium Seat Package	–	○
Leatherette seating surfaces and heated driver and front passenger seats (requires available LT Convenience Package)	–	○
Redline Edition	–	○
18" Black-finish aluminum wheels with Red accent stripes, P215/55R18 blackwall tires, Black bowtie emblems, Black grille with Black surround, Black mirror caps, Black beltline moldings and Black Trax badge with Red outline (requires available LT Convenience Package and Jet Black interior color; available with Summit White, Silver Ice Metallic or Mosaic Black Metallic exterior colors)	–	○
Sport Edition	–	○
18" gloss Black aluminum wheels, P215/55R18 blackwall tires, Black front and rear skid plates, Black bowtie emblems and Black beltline moldings (requires available LT Convenience Package and Jet Black interior color; not available with Mosaic Black Metallic exterior color)	–	○

1 A NOTE ON CHILD SAFETY: Always use seat belts and the correct child restraint for your child's age and size, even with airbags. Even in vehicles equipped with the Passenger Sensing System, children are safer when properly secured in a rear seat in the appropriate infant, child or booster seat. Never place a rear-facing infant restraint in the front seat of any vehicle equipped with an active frontal airbag. See your vehicle Owner's Manual and the child safety seat instructions for more safety information.

2 Read the vehicle Owner's Manual for important feature limitations and information. **3** When you select a monthly plan within 30 days of activating your 1-month trial, you'll receive the first 2 months of the plan you select at no additional charge when you associate an approved payment method on file to your account and authorize recurring payments for your service plan. The amount and frequency of each recurring payment is based upon the service(s) and payment interval(s) you select from the options provided. After the trial expires, OnStar will automatically bill your payment method monthly at then-current standard monthly rates. Plans containing 4G LTE data will be billed every 30 days by AT&T. You may cancel at any time by pushing your blue OnStar button or calling 1-888-466-7827. May not be combined with other offers or retroactively applied. Offer subject to change. **4** Advisor-based Turn-by-Turn Navigation is subject to User Terms and Limitations, and varies by vehicle model. Map coverage available in the United States, Puerto Rico and Canada. **5** Chevrolet Infotainment System functionality varies by model. Full functionality requires compatible Bluetooth and smartphone, and USB connectivity for some devices. **6** Go to my.chevrolet.com/learnAbout/bluetooth to find out which phones are compatible with the vehicle. Full Bluetooth feature functionality varies by device, model and software version. **7** Vehicle user interface is a product of Apple and its terms and privacy statements apply. Requires compatible iPhone and data plan rates apply. **8** Vehicle user interface is a product of Google and its terms and privacy statements apply. Requires the Android Auto app on Google Play and an Android compatible smartphone running Android 5.0 or higher. Data plan rates apply. **9** Not compatible with all devices. **10** If you decide to continue service after your trial, the subscription plan you choose will automatically renew thereafter and you will be charged according to your chosen payment method at then-current rates. Fees and taxes apply. See the SiriusXM Customer Agreement at siriusxm.com for complete terms and how to cancel. All fees, content, features and availability are subject to change. **11** Service varies with conditions and location. Requires active service and paid AT&T data plan. Visit onstar.com for details and limitations. **12** Standard connectivity available only to original purchaser for 10 years. Services enabled by Connected Access are subject to change. Does not include emergency or security services. Diagnostic capabilities vary by model and service plan. Message and data rates may apply. Requires contact method on file and enrollment to receive alerts. Not all issues will deliver alerts. Visit onstar.com for details and limitations.

DIMENSIONS

Length	167.6"	Width	69.9"	Head Room (front/rear)	39.6"/38.8"
Wheelbase	100.6"	Front Track	60.6"	Leg Room (front/rear)	40.8"/35.7"
Height	64.8" (without roof rails) 65.9" (with roof rails)	Rear Track	60.6"	Shoulder Room (front/rear)	54.1"/52.8"

MAXIMUM CAPACITIES

Fuel tank (approximate)	14 gallons
Passenger volume	92.8 cubic feet/seats 5
Cargo volume ¹	18.7 cubic feet (rear seats up) 48.4 cubic feet (rear seats folded)



Enroll. It's quick, it's easy and there is no cost to join. You will automatically receive points just for enrolling². To enroll, visit mychevroletrewards.com.

Earn. Earn points on eligible new vehicle leases or purchases, which can be redeemed toward accessories³, vehicle service and more. Plus, get points for paid service⁴, select OnStar[®] and Connected Services plans⁵ and many others.

Enjoy. Use points toward eligible accessories³, paid service, eligible new vehicles⁶ and more. It's our way of saying thanks!



First oil change is covered⁷. Experience Chevrolet Complete Care, a comprehensive coverage, limited warranty and protection program that comes standard with every new 2021 Chevrolet Trax lease and purchase.

Simply, it is designed around you, to make it easy to help keep your Chevrolet like new – and give you the confidence you deserve. For more information, visit chevrolet.com/complete-care.

NEW VEHICLE LIMITED WARRANTY

Chevrolet will warrant each 2021 Trax with:

3-year/36,000-mile⁸ Bumper-to-Bumper Limited Warranty.

6 years/100,000 miles⁹ of Rust-Through Protection.

5-year/60,000-mile⁸ Powertrain Limited Warranty.

5 years/60,000 miles⁸ of Roadside Assistance⁹ and Courtesy Transportation.

¹ Cargo and load capacity limited by weight and distribution. ² Must be 18 years or older. Points may be earned and redeemed only at participating GM entities, dealers or third party retailers in the United States (excluding Puerto Rico, the U.S. Virgin Islands or Guam). Points are not earned on taxes or certain fees, and expire 5 years from when points are earned. Some restrictions apply. For more information, please view full program Terms & Conditions. ³ Members may use the voucher on eligible Chevrolet, Buick, GMC and Cadillac Accessories purchased through a participating dealership. Voucher must be used by expiration date noted. Any unused amount of the voucher will be forfeited. ⁴ Excludes taxes, fees and body shop repair orders. It could take up to 15 days for points to post to your account. ⁵ Connected vehicle services vary by vehicle model and require working electrical system, cell reception and GPS signal. Requires active service plan. OnStar links to emergency services. Visit onstar.com for details and limitations. ⁶ Not compatible with some other offers, including the GM Employee Discount programs. Excludes 2020 Chevrolet Corvette. Dealer contribution may affect final consumer cost. ⁷ Maintenance visit must occur within first year of vehicle delivery. Service visit consists of ACDelco dexos¹™ Full Synthetic Oil and Filter Change/Tire Rotation/MPVI. Does not include air filters. See participating dealer for other restrictions and complete details. ⁸ Whichever comes first. See dealer for details. ⁹ Roadside service provided by Allstate Roadside Services. Limitations apply.

IMPORTANT INFORMATION

Chevrolet Owner Center (my.chevrolet.com). Everything you need to know. Anything you need to do. Your Chevrolet Owner Center makes it easy. Create your account today to get the most out of your new vehicle. Get special alerts and offers, schedule service, review your maintenance schedule, and view how-to videos specifically for your vehicle. All online, anytime. Visit the Owner Center today to register or take a tour.

Engines. Chevrolet products are equipped with engines produced by GM Global Propulsion Systems or other suppliers to GM worldwide. The engines in Chevrolet products may also be used in other GM makes and models.

Assembly. Chevrolet vehicles and their components are assembled or produced by different operating units of General Motors, its subsidiaries or suppliers to GM worldwide. We sometimes find it necessary to produce Chevrolet vehicles with different or differently sourced components than originally scheduled. Since some options may be unavailable when your vehicle is assembled, we suggest you verify that your vehicle includes the equipment you ordered and that, if there were changes, they are acceptable to you.

Chevrolet Connected Services and OnStar. Connected vehicle services vary by vehicle model and require an active service plan, working electrical system, cell reception and GPS signal. OnStar links to emergency services. Visit onstar.com for details and limitations.

A note on child safety. Always use seat belts and the correct child restraint for your child's age and size, even with airbags. Even in vehicles equipped with the Passenger Sensing System, children are safer when properly secured in a rear seat in the appropriate infant, child or booster seat. Never place a rear-facing infant restraint in the front seat of any vehicle equipped with an active frontal airbag. See your vehicle Owner's Manual and the child safety seat instructions for more safety information.

Important words about this catalog. We have tried to make this catalog comprehensive and factual. We reserve the right, however, to make changes at any time, without notice, in prices, colors, materials, equipment, specifications, models and availability. Specifications, dimensions, measurements, ratings and other numbers in this catalog

and other printed materials provided at the dealership or affixed to vehicles are approximations based on design and engineering drawings, prototypes and laboratory tests. Your vehicle may differ due to variations in manufacture and equipment. Since some information may have been updated since the time of printing, please check with your Chevrolet dealer for complete details. Chevrolet reserves the right to lengthen or shorten the model year for any product for any reason or to start and end model years at different times. Certain vehicle features may lose their usefulness over time due to obsolescence from technological changes. Unless otherwise noted, all claims based on GM Small SUV segment and latest available competitive information. Excludes other GM vehicles.

Fleet orders. Some standard content may be deleted on fleet orders. See dealer for details.

Chevrolet ownership experience. Chevrolet is committed to enhancing the vehicle shopping and ownership experience through a wide array of programs. Visit chevrolet.com to build and price, find a vehicle, request a quote, compare vehicles, find financial tools or track your vehicle order. You'll also find information about 24-hour Roadside Assistance, Courtesy Transportation, Customer Assistance, GM Mobility, safety and current incentives.

Chevrolet.com/safety. Chevrolet is committed to helping keep you and your family safe – from the start of your journey to your destination. That's why Chevrolet vehicles offer standard and available safety and security features to help give you peace of mind.

GMmobility.com (1-800-323-9935). GM MobilitySM offers financial assistance for eligible adaptive equipment to make automotive travel easier for persons with disabilities or special transportation needs. To learn more about special GM Mobility offers, visit gmmobility.com.

The BuyPower Card. The Chevrolet BuyPower Card – Every purchase you make with the BuyPower Card from Capital One* helps you earn toward an eligible new Chevrolet, Buick, GMC or Cadillac vehicle. There's no limit on the amount you can earn or redeem, and your Earnings don't expire. Visit chevroletbuypowercard.com/catalogs.

* Capital One, N.A. is the issuer of the BuyPower Card. General Motors ("GM") is responsible for the operation and administration of the Earnings program.



GM, the GM logo, Chevrolet, the Chevrolet logo, and the slogans, emblems, vehicle model names, vehicle body designs and other marks appearing in this catalog are the trademarks and/or service marks of General Motors, its subsidiaries, affiliates or licensors. ©2020 OnStar LLC. All rights reserved. Sirius, XM, SiriusXM and all related marks and logos are trademarks of Sirius XM Radio Inc. The Bluetooth word mark is a registered trademark owned by Bluetooth SIG, Inc., and any use of such mark by Chevrolet is under license.

©2020 General Motors. All rights reserved. August 2020

FIND NEW ROADS™

CHEVROLET.COM

